

Fieldwork Test introduction (1-1.5 hrs)

30 July, 2010

Logistics of the field work (see also PPT presentation)

- A. The fieldwork test is in two parts: a mapping exercise (outdoor) and analysis of a geographical issue (indoor). Students will map features of the study area on the morning of 31 July (7:40am until 11:40am), and will write a geographical analysis of the study area in the afternoon.
- B. The field work tests are individual; this is not a team event. There must be no discussion of anything related to the test in the field or in the test room. You are not permitted to use any portable device or mobile phone at any stage during the day.
- C. Students will be assigned to one of 18 mixed groups in the field (six students per group), each with a group leader from Taipei. The group leader will control the time, route and student safety, but will not provide any information about the field site. Students of an individual group must always walk together.
- D. Each student will be provided a file, including base maps, reference maps and some pictures of local birds and plants.
- E. Students should use the reference material to support their field work (make notes, sketch maps). **Important:** The final map has to be drawn **on the plastic cover sheet** with the base map in it. Don't start to use the map in the plastic cover sheet until you have finished your field observations. Then use the marker pens provided to complete your field observation map. This map will be the only one assessed by the field work jury. Please **write your name and team on the back of the cover sheet.**
- F. The whole file (all maps and reference materials) will be returned to the group leader at the end of field observation (10:40am). The file, **except the final map from the morning**, will be given back to the candidates at the beginning of the analysis of the geographical issue.
- G. In addition to what you have observed in the field, more information will be provided at the beginning of the analysis of a geographical issue on the afternoon of 31 July. You will have 2 or 2.5 hours for the analysis, including 10 minutes reading time. (Note program says 2.5 and 3 hours). Tests are in rooms A to E.
- H. Students should prepare for hot and humid weather on 31 July. Please wear the **white 2010iGeo T-shirt** and hat and bring water bottle(s). Bring sun glasses and sun screen. If you feel uncomfortable, please report to the group leader and

he/she will report to the FW test supervisor immediately.

- I. Students should assemble at **7:40am** in the school **parking lot (P)**. Find your bus and the group leader (no. 1-18). In the bus, files containing fieldwork materials will be given to students at 7:50am. Students will have 10 minutes to read through the field work instructions.
- J. Buses will leave at 8:00am. Be aware, it is your responsibility to show up on time. The buses will not wait for latecomers.
- K. Background for the fieldwork presentation
 - 1. Introduction to Taipei Basin (Slides)
 - 2. Wetlands in Taipei (Film - 15 minutes)
 - 3. Bird migration route and habitats of shorebird, waterfowl bird and land bird (Slides; reference sources)
 - 4. The World Commission on Protected Areas (WCPA) provides categories for Protected Areas (Slides or handouts)

Fieldwork Test Briefing

Friday 30 July, 14:00
Sacred Heart Auditorium

The fieldwork test is in two parts: a mapping exercise (outdoors) and analysis of a geographical issue (indoors). Students will map features of the study area on the morning of 31 July (7:40am until 11:40am), and will write a geographical analysis of the study area in the afternoon.

The field work tests are individual; this is not a team event. There must be no discussion of anything related to the test in the field or in the test room. You are not permitted to use any portable device or mobile phone at any stage during the day.

Students will be assigned to one of 18 mixed groups in the field (six students per group), each with a group leader from Taipei. The group leader will control the time, route and student safety, but will not provide any information about the field site. **Students of an individual group must always walk together.**

Each student will be provided a file, including base maps, reference maps and some pictures of local birds and plants. Students should use the reference material to support their field work (make notes, sketch maps). **Important:** The final map has to be drawn **on the plastic cover sheet** with the base map in it.

Don't start to use the map in the plastic cover sheet until you have finished your field observations. Then use only the marker pens provided to complete your field observation map. This map will be the only one assessed by the field work jury. Please **write your name and team on the back of the cover sheet.**

Field observation will end at 10:30am. Your file must be handed in to the group leader at the end of mapping exercise(11:10am). The file, **except the final map from the morning**, will be given back to you at the beginning of the analysis of the geographical issue.

In addition to what you have observed in the field, more information will be provided at the beginning of the analysis of a geographical issue on the afternoon of 31 July. You will have 2 or 2.5 hours for the analysis, including 10 minutes reading time. (Note program says 2.5 and 3 hours). Tests are in rooms A to E.

Students should prepare for hot and humid weather on 31 July. Please wear your **white 2010iGeo T-shirt** and hat and bring water bottle(s). Bring sun glasses and sun screen. If you feel uncomfortable, please report to the group leader and he/she will report to the FW test supervisor immediately.

Students should assemble at **7:40am** in the school **parking lot (P)**. Find your bus and group leader (no. 1-18). In the bus, files containing fieldwork materials will be given to you at 7:50am. Students will have 10 minutes to read through the field work instructions. Buses will leave at 8:00am. It is your responsibility to show up on time. The buses will not wait for latecomers.

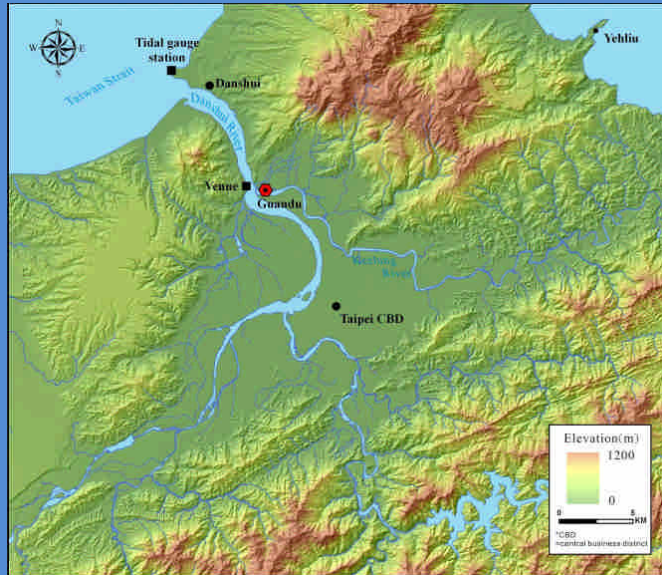
Background for the fieldwork presentation (Dr Tsung-Yi Lin)

- Introduction to Taipei Basin
- Wetlands in Taipei
- Bird migration route and habitats of shorebirds, waterfowl birds and land birds
- The World Commission on Protected Areas (WCPA) provides categories for Protected Areas

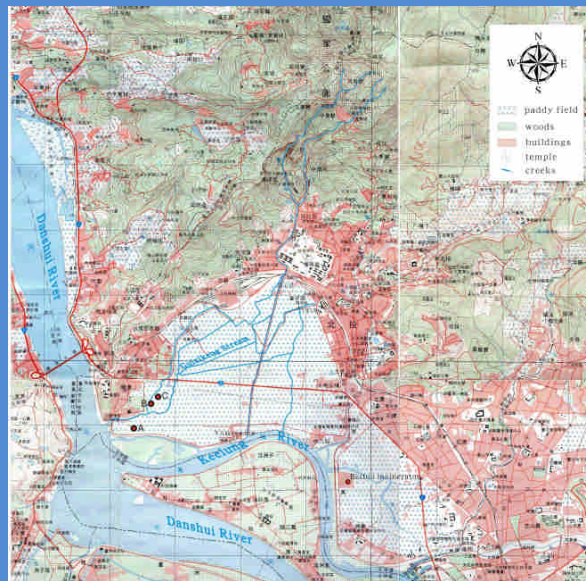
Taipei Basin






Taipei Basin



Taipei Basin



Introduction of water birds and land birds

Water birds		Land birds
Shorebirds (Wader)	Waterfowls	
		
Shorebirds, like sandpipers and plovers, use mud flat as their foraging habitats.	Waterfowls, like mallards and ducks, use open water for foraging habitats and mud flat for rest.	Land birds, like sparrows and warblers, perch in grass and tree, grassland, farmland and woodland are their habitats.

WCPA Categories System for Protected Areas Task Force

- WCPA = World Commission on Protected Areas
- IUCN Protected Areas Categories System
 - Ia Strict Nature Reserve
 - Ib Wilderness Area
 - II National Park
 - III Natural Monument or Feature
 - IV Habitat/Species Management Area
 - V Protected Landscape/ Seascape
 - VI Protected area with sustainable use of natural resources